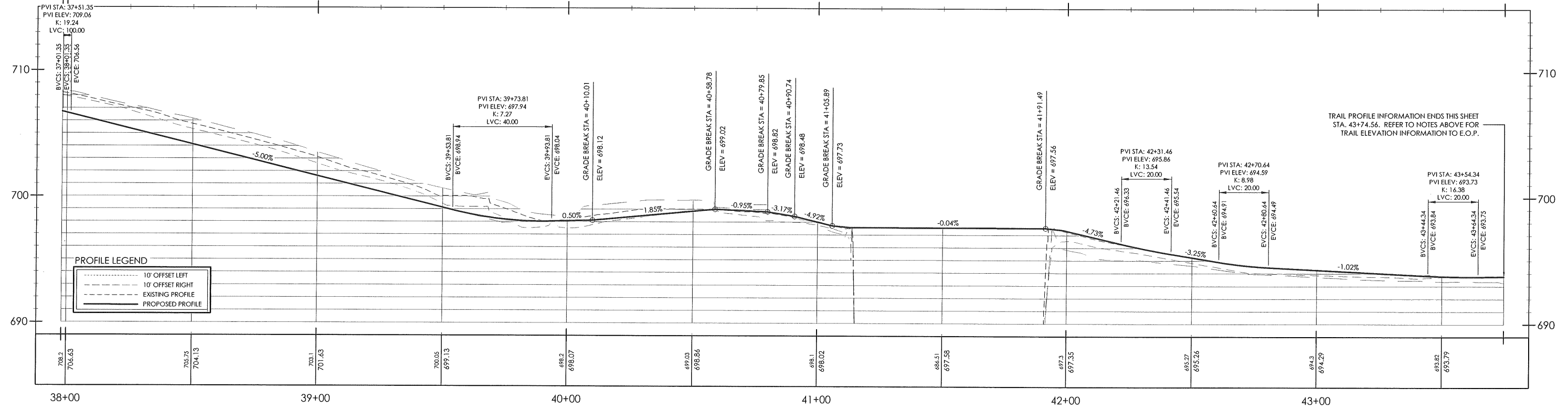
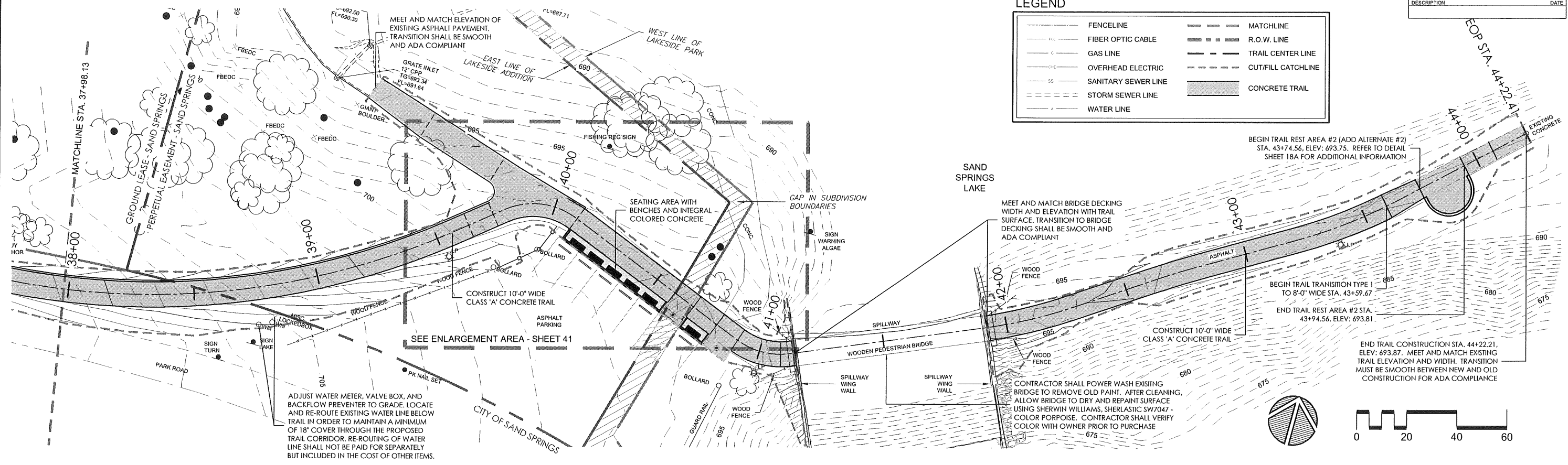


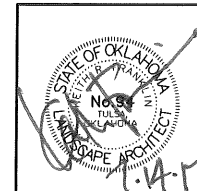
OKLAHOMA DEPARTMENT OF TRANSPORTATION					
FED. ROAD DIST. NO.	STATE	PROJ. NO.	FISCAL YEAR	SHEET NO.	TOTAL SHEETS
6	OKLA	28844(04)			
DESCRIPTION			REVISIONS	DATE	

LEGEND

—	FENCELINE	—	MATCHLINE
—	FIBER OPTIC CABLE	—	R.O.W. LINE
—	GAS LINE	—	TRAIL CENTER LINE
—	OVERHEAD ELECTRIC	—	CUT/FILL CATCHLINE
—	SANITARY SEWER LINE	—	CONCRETE TRAIL
—	STORM SEWER LINE		
—	WATER LINE		



F:\582 Sand Springs Park Road Trail\Final\Civil 3D - Base Files\582 - Plan-Profile and Signage-Stripping.dwg, 7/14/2017 9:40:17 AM



City of Sand Springs - Park Road Trail		PREPARED BY:	LANDPLAN CONSULTANTS
Design	JM 7/16	1100 West 23rd Street, Tulsa, OK 74107, 918-581-6004	
Drawn	JM/BB 8/16	Tulsa County	
Checked	KF/JM 6/17	PLAN & PROFILE (8)	
Approved		STATE JOB NO. 28844(04)	
Squad	LandPlan	Sheet No. 38 of 62	